

# elements

C O N D O M I N I U M S

LIVE IN YOUR **ELEMENT**

*Pratt Homes*

elements  
C O N D O M I N I U M S

LIVE IN YOUR **ELEMENT**

*Pratt Homes*

elements  
C O N D O M I N I U M S

LIVE IN YOUR **ELEMENT**

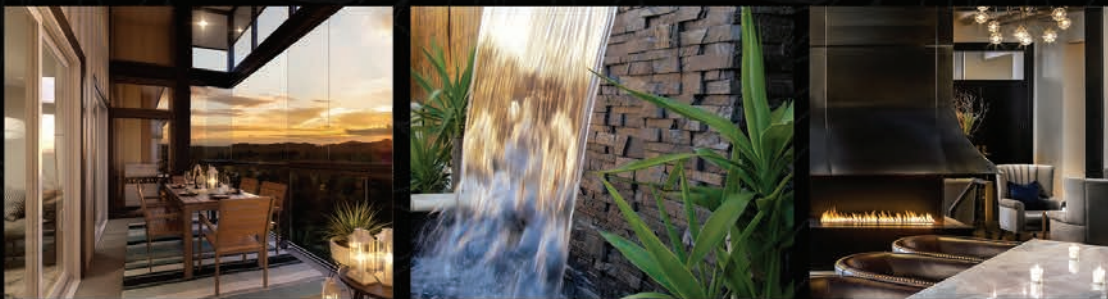
*Pratt Homes*

# elements

CONDOMINIUMS



LIVE IN YOUR **ELEMENT**



FROM THE **300's**

[elementscondos.ca](http://elementscondos.ca)

*Pratt Homes*



WATER



FIRE



EARTH



AIR



WATER



FIRE



EARTH



AIR

A SAMPLE OF OUR BRAND FONTS

# Human Nature

## Biophilic Design

Biophilic design is a concept used within the building industry to increase occupant connectivity to the natural environment through the use of direct nature, indirect nature, and space and place conditions. Used in a residential building scale, it is proven that this idea has health, environmental, and economic benefits for building occupants and urban environments, with few drawbacks.

Incorporating direct or indirect elements of nature into the built environment have been demonstrated through research to reduce stress, blood pressure levels and heart rates, whilst increasing productivity, creativity and self reported rates of well-being.

### OUR BRAND COLOURS



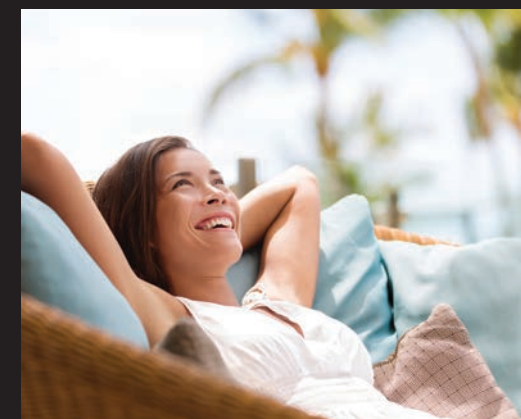
Night

Earth

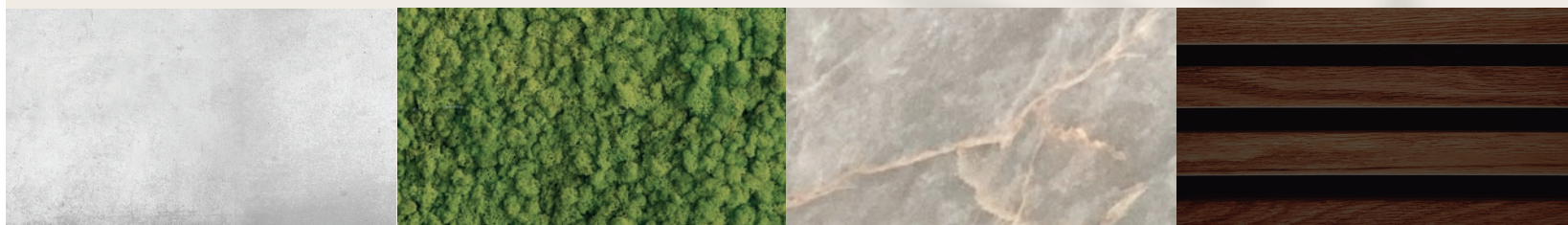
Water

Air

Fire



*Pratt Homes*



# elements

CONDOMINIUMS



WATER



FIRE



EARTH



AIR



LIVE IN YOUR **ELEMENT**

FROM  
THE

# 300's

[elementscondos.ca](http://elementscondos.ca)

*Pratt Homes*



WATER



FIRE



EARTH



AIR

LIVE IN YOUR **ELEMENT**



# elements

C O N D O M I N I U M S

**Imagine living in a condominium that feels like a vacation getaway.** In response to today's day and age where people are staying local and working from home, we are creating a community like non-other. A place where one feels at home on every inch of the property and not just within their condo unit.

With beautiful shared entrance spaces and exterior experiences, Elements Condominiums will be loved by all residents and their guests. Elements is a perfect backdrop to creating meaningful memories and moments while surrounded by carefully crafted experiences of the senses.

As human's, we have an innate tendency to connect with nature and all living things and Elements Condominiums is embracing just that. Surrounding the residents in all of nature's key elements is the passion behind this community. People will naturally gravitate, and feel at home here!

## Concept Behind Elements Condominiums

Studies have shown that surrounding yourself with nature improves your overall wellness. When immersed in nature, you experience feelings of joy, peace, and freedom. Connecting with these feelings brings you mental clarity and will uplift with your inner spirit. These positive emotions can help improve your quality of life. Elements Condominiums aims to enhance the quality of the residents' lives by bringing them the ability to connect with nature while living a healthy, active lifestyle in a beautiful setting.

## Elements Condominiums Is All About The Experience

Attention to details will wow the residents and give them an ultimate feeling of luxury within a place they will be proud to call home. Much like a resort getaway, Elements is a collection of impressive experiences that embrace the elements. Residents will love waterfalls, fire features, indoor plant-life and over-sized solarium patios that will literally have them floating within nature's elements - year round.

*Pratt Homes*



WATER



FIRE



EARTH



AIR

LIVE IN YOUR **ELEMENT**



# elements

C O N D O M I N I U M S

## BRAND EXPERIENCE IDEAS FOR EXTERIOR

- Plants everywhere with exterior living wall systems
- Lighting on exterior to feel grand and distract from parking
- Main building faces the sunrise and will have large windows
- Running track, outdoor gym equipment, children's park
- Perhaps hydrate stations / bottle fill-up
- Front entrance outdoor waterfalls for ambiance upon arrival
- Outdoor community sitting areas with wood burning fireplaces
- Covered bicycle racks encouraging local bike transportation and physical activity
- Car charging stations to encourage electric cars
- Amazing front entrances with glass and fire features
- Custom Elements art installations from world renowned sculptor, Ron Baird

## BRAND EXPERIENCE IN BUILDING / UNITS

- Living plants and live trees in foyer of buildings
- Stunning gas fireplace in foyers
- Strategically placed lighting to create ambiance
- Intentional diffuser scent for lobbies
- Over-sized solarium patios, enclosed in glass walls to enjoy year-round
- Hook for swinging chair on patio (infrastructure to create hook for swing)
- Unique chandelier lighting on all solarium patios
- Creative areas designed for special lighting for ambiance
- Build small niched areas or built-in shelving / hooks / to encourage plant life / herb garden
- Built-in water filter systems to support less plastic waste and local consumption
- Built-in air filter systems to improve air quality (key for post Covid 19 consumer behavior)
- Exercise room located in all condominiums on main entrance level

*Pratt Homes*



WATER



FIRE



EARTH



AIR

LIVE IN YOUR **ELEMENT**



# elements

CONDOMINIUMS

Some nice wording we found during research:

## ELEMENTS BALCONIES

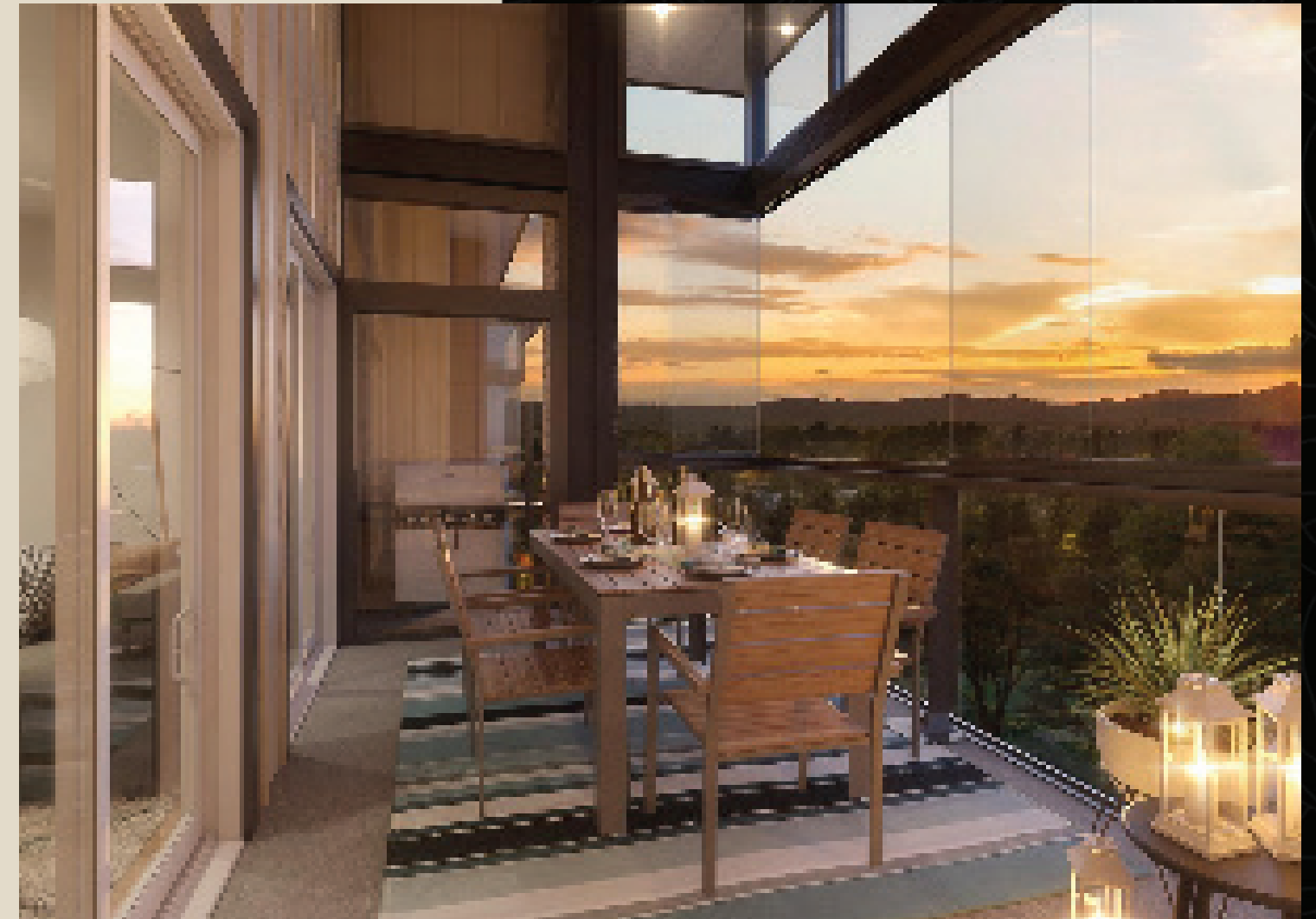
- Spend more time outdoors in comfort and style
- Windows are easy to use and are constructed with high quality materials that require little maintenance
- Enjoy the protection from wind, rain, and UV rays
- Your balcony can be used year-round
- Provides added safety for kids and pets
- Enhances the security and privacy of your home
- Glass balconies add acoustic and insulating value

## LIVING SPACES

- Functional open design to the kitchen allows for interaction with your guests
- Double sliding patio doors open up to the solarium deck to increase your livable space

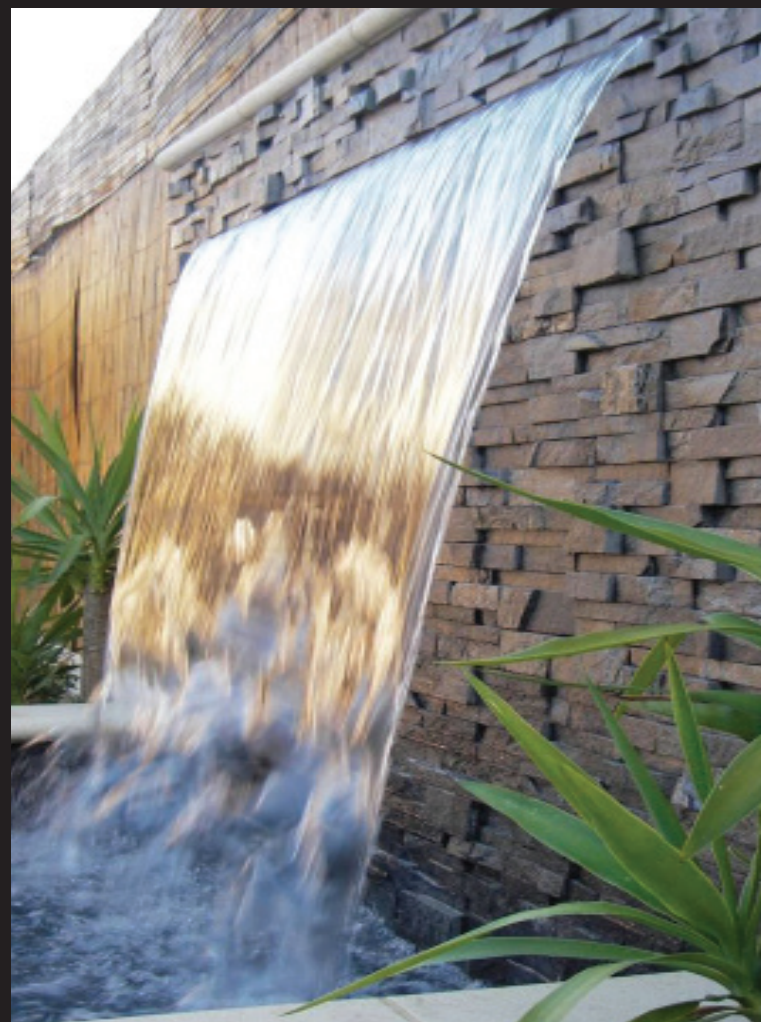
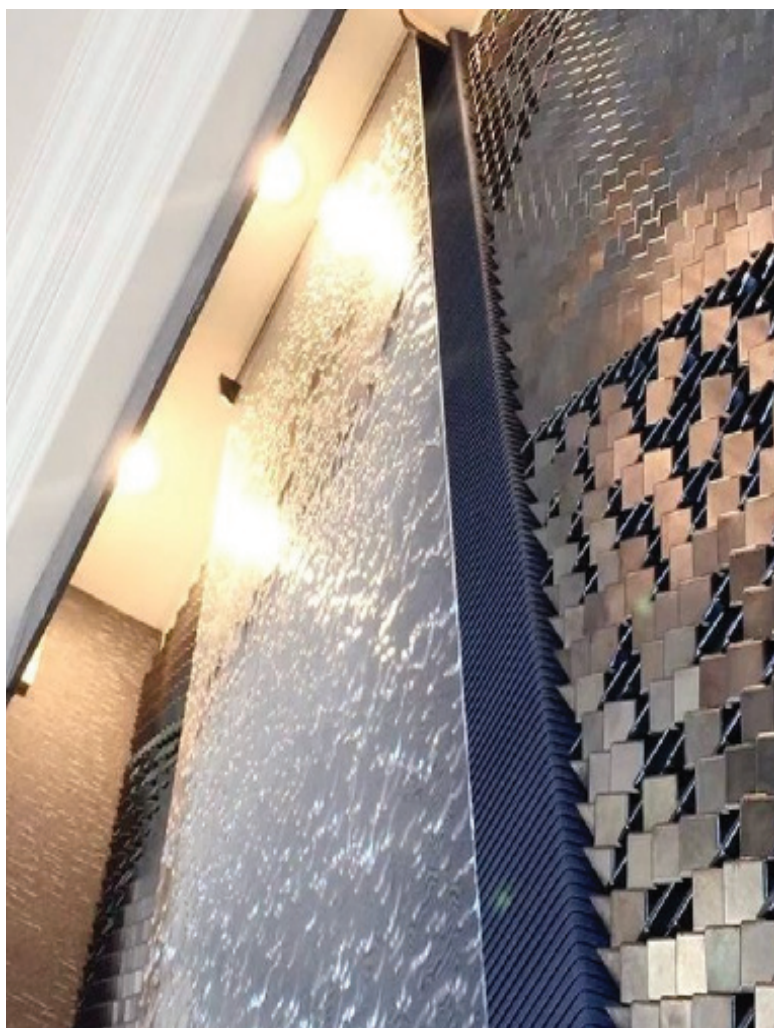
## WELCOMING EXTERIORS

- An attractive building helps keep its value
- Covered entrance way with large timbers to get you out of the rain
- Visitor bike racks near entrance

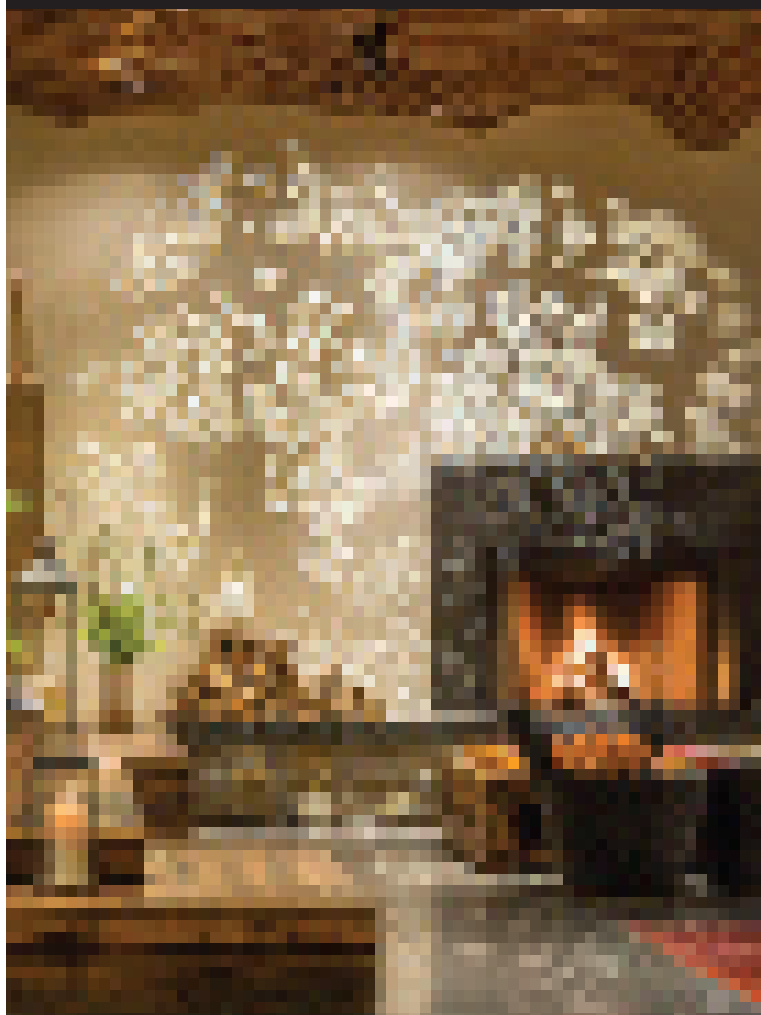


LIVE IN YOUR **ELEMENT**

*Pratt Homes*



*Pratt Homes*



# elements

CONDOMINIUMS



LIVE IN YOUR **ELEMENT**

*Pratt Homes*